



# SL-401 Series



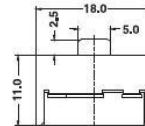
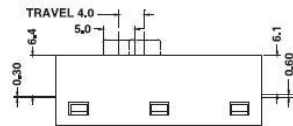
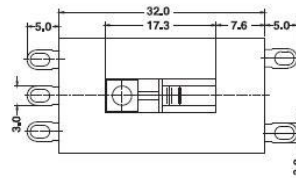
SL-401

## Specification:

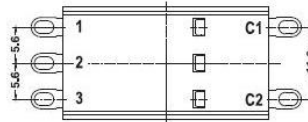
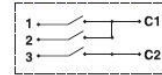
6(3)A 250VAC T85 5E4  
 10(3)A 250VAC T85



6A 250VAC T105  
 12A 125VAC  
 8A 250VAC T105  
 16A 125VAC



CIRCUIT DIAGRAM



## SL-401

001

M

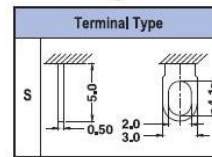
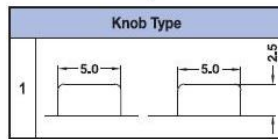
1

S



Circuit
001
002
003
004
005
006
007
008
009

Current
L 10(3)A 250VAC
6(3)A 250VAC 5E4
16A 125VAC



Internal Use Only

SLIDE SWITCH

## CIRCUIT OPTIONS

CIRCUIT 001				CIRCUIT 002				CIRCUIT 003				CIRCUIT 004				CIRCUIT 005			
ELECTRIC CIRCUIT				ELECTRIC CIRCUIT				ELECTRIC CIRCUIT				ELECTRIC CIRCUIT				ELECTRIC CIRCUIT			
POSITION	1-C1	2-C1	3-C2	POSITION	1-C1	2-C1	3-C2	POSITION	1-C1	2-C1	3-C2	POSITION	1-C1	2-C1	3-C2	POSITION	1-C1	2-C1	3-C2
A				A				A				A				A			
B		●	●	B		●	●	B	●	●	●	B	●	●	●	B	●	●	●
C	●		●	C	●	●	●	C	●	●	●	C	●	●	●	C	●	●	●
D	●	●	●	D	●	●	●	D	●	●	●	D	●	●	●	D	●	●	●

CIRCUIT 006				CIRCUIT 007				CIRCUIT 008				CIRCUIT 009							
ELECTRIC CIRCUIT				ELECTRIC CIRCUIT				ELECTRIC CIRCUIT				ELECTRIC CIRCUIT							
POSITION	1-C1	2-C1	3-C2	POSITION	1-C1	2-C1	3-C2	POSITION	1-C1	2-C1	3-C2	POSITION	1-C1	2-C1	3-C2	POSITION	1-C1	2-C1	3-C2
A				A				A				A				A			
B	●			B	●	●		B	●	●		B	●	●		B	●	●	
C	●		●	C	●		●	C	●		●	C	●		●	C	●		●
D	●	●	●	D	●	●	●	D	●	●	●	D	●	●	●	D	●	●	●

For more circuit options, please contact us.