

Mm SB-60 Series



SB-60N



SB-60A



SB-60N w/Bezel



SB-60 Cap

Specifications:

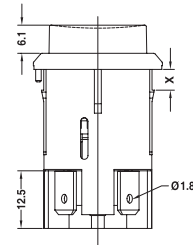
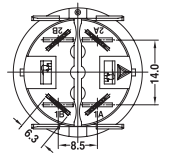
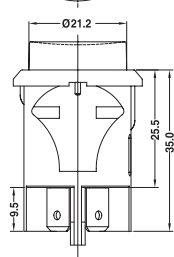
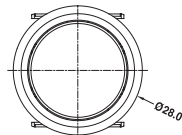
8(8)A 250VAC T105/55 5E4
16(8)A 250VAC T105/55



16A 250VAC T105
16A 125VAC
1HP 250VAC T105
1/2HP 125VAC

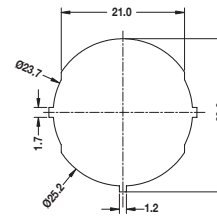


PUSH SWITCH

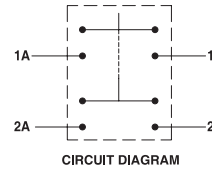


Suggested panel hole size

Panel thickness	X
0.70-3.50	3.5
0.70-4.50	4.5



Best performance for Panel thickness at 3.0-3.5mm for 3.5mm; 4.0-4.5mm for 4.5mm.



SB-60

A — 2 — H — 1 — BK — BK — 1 — 0 — 0 — T — 0 —

Function	No. of Poles	Current	Base Type	Base Color	Knob Color	Knob Type	Printing	Color of Printing	Terminal Type	Lamp Voltage	Internal Use Only
A ON-OFF w/lock	1 Single	H 16(8)A 250VAC	1	BK Black	BK Black	1	0 None	0 None		0 None	<div style="border: 1px solid black; padding: 2px;"> Internal Use Only </div>
D (ON)-OFF	2 Double	8(8)A 250VAC 5E4	2		WT White		1	1 White		1 12V	
N ON-OFF w/lamp		16A 125VAC			GE Grey		2	2 Black		2 24V	
		1HP 250VAC			RE Red		3	3 Red		3 110V	
		1/2HP 125VAC	3		GR Green		4	4 Blue	4 220V		
					BL Blue		5	5 Yellow			
					OR Orange						
					YE Yellow						
					AM Amber						