

ROCKER SWITCH

PART NO : OR-L

SPECIFICATION

Contact Rating : 10A 125V AC 6A 250V AC T65

6A 250V AC T85/T55

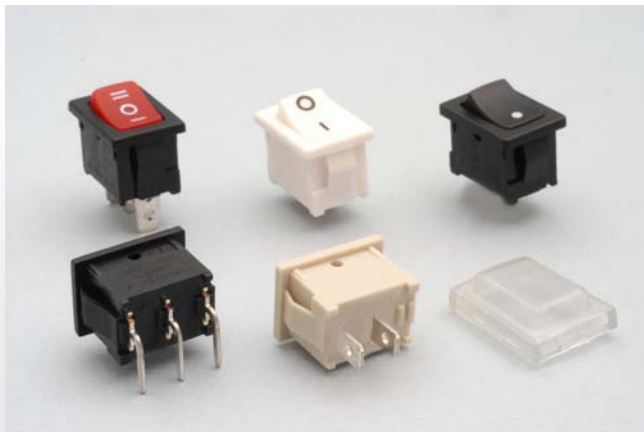
Contact Resistance : 50 mΩ MAX

Insulation Resistance : 500 MΩ (MIN) 500V DC

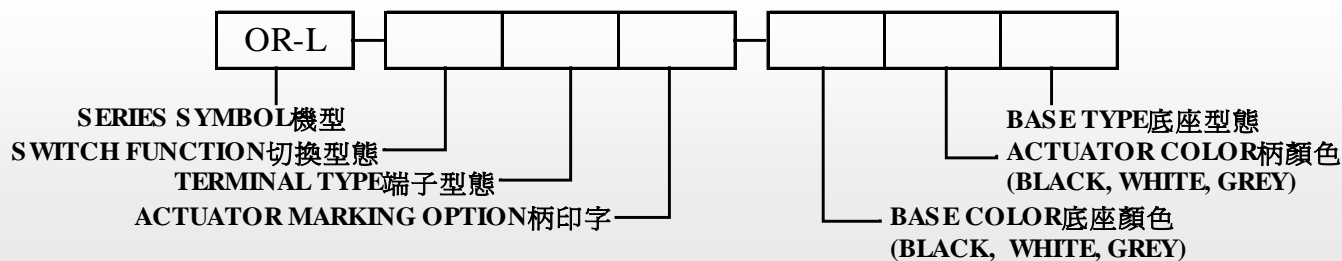
Dielectric Strength : 1800V AC-1 minute

Electric Life : 10,000 cycles

Operating Force : 450 ± 250gram

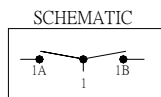
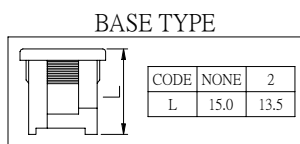
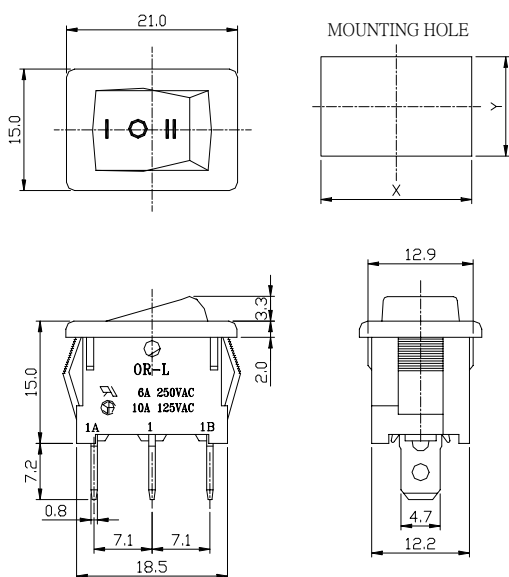


PART NUMBERING SYSTEM



DIMENSIONS

in mm

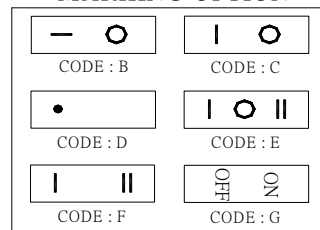


PANEL THICKNESS	DIM.X	DIM.Y
0.75-1.25	19.2/19.1	13.0/12.9
1.25-2.0	19.4/19.3	13.0/12.9
2.0-3.0	19.8/19.7	13.0/12.9

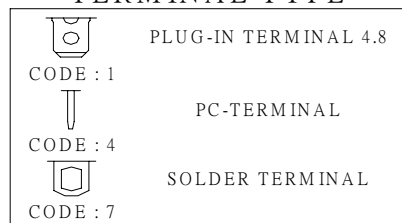
SWITCHES FUNCTION

CODE	LEFT	CENTER	RIGHT
1	OFF	NONE	ON
2	ON	NONE	ON
3	ON	OFF	ON
4	OFF	NONE	(ON) MONENTARY

ACTUATOR MARKING OPTION



TERMINAL TYPE



ANGLED PC-TERMINAL

