

### SPECIFICATION

Contact Rating : 2.5A 250V AC

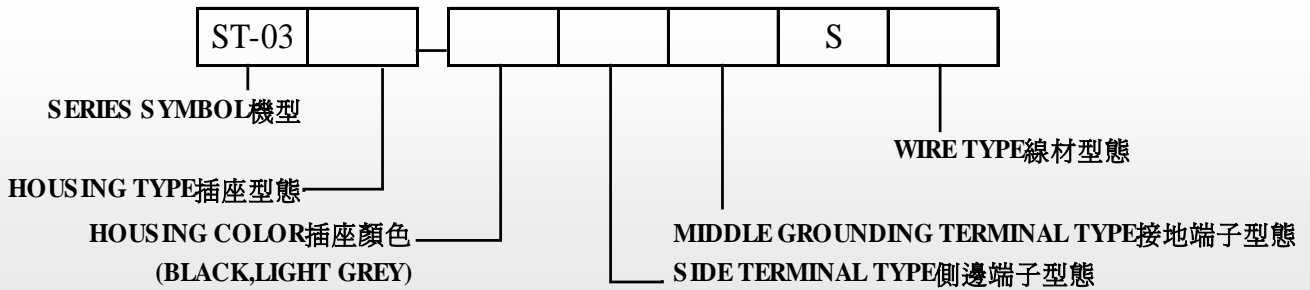
Insulation Resistance : 100 MΩ (MIN) 500V DC

Dielectric Strength : 2000V AC-1 minute

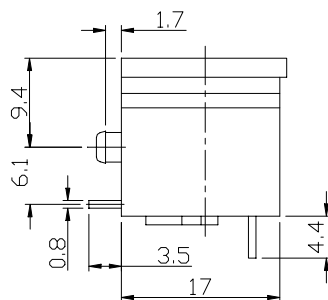
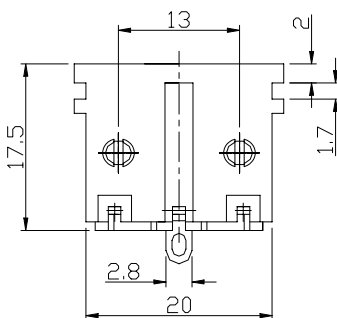
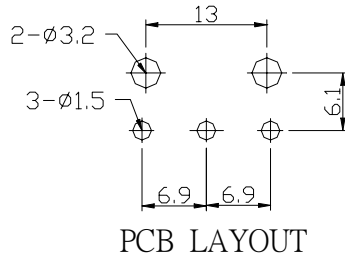
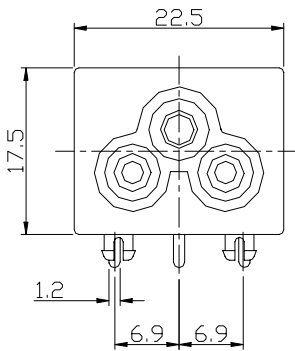
Operational Temperature : 0~85 °C



### PART NUMBERING SYSTEM



### DIMENSIONS in mm



HOUSING TYPE	SIDE TERMINAL TYPE	MIDDLE GROUNDING TERMINAL TYPE
 CODE : B	 CODE : W	 CODE : NONE
 CODE : D	 CODE : P	 CODE : C
 CODE : J	 CODE : U	 CODE : C
 CODE : S	 CODE : S	 CODE : D
		 CODE : AB

CODE	T	B	N
X	3.75	3.5	3.75
Y	4.4	-	-
Z	-	2	-